

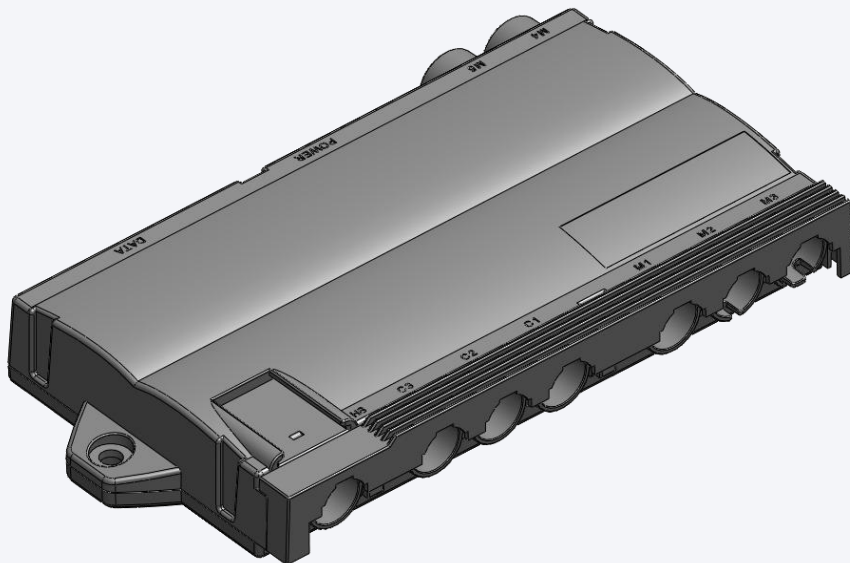
# FLEXC-6-RF

Rev0

User Manual

---

LOGIC  
home



# Contents

1	Preface.....	3
1.1	Target group and previous knowledge.....	3
1.2	Symbols used in safety instructions.....	3
1.3	Unpacking.....	4
1.4	Safety instructions.....	4
1.4.1	Duty Cycle.....	4
1.4.2	Movement Duty Cycle.....	5
1.4.3	Massage Duty Cycle.....	5
1.4.4	General safety instructions.....	6
2	Commissioning.....	8
2.1	Mounting Requirements.....	8
2.2	Single System.....	9
2.2.1	Connect actuators.....	9
2.2.2	Connect massage motors.....	10
2.2.3	Plug in the output cable.....	10
2.2.4	Snap in the power cord to the hooks.....	10
2.2.5	Connect power supply unit to the mains.....	10
3	Further information.....	11
3.1	End of life disposal.....	11
3.2	Technical data.....	11
3.3	Optional products.....	11
3.4	FCC conformity.....	12
4	Manufacturer.....	12

# 1 Preface

## 1.1 Target group and previous knowledge

This user manual addresses the following people:

- Technicians who assemble and put electrically adjustable beds into operation (by installing motors and control units, configuring control units, etc.)
- Furniture assembly, service and maintenance personnel who put electric height-adjustable beds into operation in showrooms or at the customers

The following is required for installing, operating and configuring electrically adjustable beds:



- Basic mechanical and electrical skills (with suitable qualifications)
- Reading the user manual

## 1.2 Symbols used in safety instructions

This user manual contains safety instructions with symbols drawing your attention to possible dangers and residual risks. They indicate the following:



**Danger:** This warning symbol advises you of imminent danger to people's lives and health.

*Failure to observe this warning may result in health problems, serious injuries and damage to property.*



**Caution:** This warning advises you of possible dangers from electric current.

*Failure to observe this warning may cause injuries and damage to property.*



**Note:** This symbol advises you of important information that must be noted for operating the system.



**Danger:** This warning advises you of a possible risk of body parts being trapped or pinched in exceptional cases.

*Failure to observe this warning may result in health problems, serious injuries and damage to property.*



**Note:** You must read the user manual.

### 1.3 Unpacking

The products come packed in a cardboard box. Some components are also sealed in plastic film. To unpack, proceed as follows:

1. Remove the cardboard and plastic film from the components.
2. Check the package contents.
3. Dispose of the packaging materials.
4. Keep the user manual at hand for the operators.



**Note:** Ensure eco-friendly disposal of the packaging materials (separate the plastic parts and cardboard for collection).

---

### 1.4 Safety instructions

This user manual contains safety instructions that draw your attention to any possible risks, thus enabling safe operation of the system. Please observe these warnings and instructions at all times.

#### 1.4.1 Duty Cycle

The system is able to provide its functionality for certain periods of time. These times of availability are called duty cycle. The intention of the duty cycle is to prevent the system components from overheat and damage. In general any duty cycle related functionality is managed by the control box. While in operation the control box dynamically calculates the remaining duty cycle.



**Note:** If one or more of the limits of any duty cycle is reached the control box cuts off the corresponding operation immediately.

---



**Note:** The system resets all duty cycle counters at each power on of the system.

---



**Note:** The system offers a duty cycle which can be set by parameters.

---

### 1.4.2 Movement Duty Cycle



**Note:** The system is able to operate the actuators continuously under full load for at least 2 minutes within a 20 minutes time period. Do not exceed this time period.



**Note:** To prevent the control unit and the massage motors from overheat and damage a reversible thermal fuse is integrated in the system.



**Note:** The power supply has an over voltage protection.



**Note:** Along with the duty cycle monitoring, the control box is equipped with an over current cut off for the actuators, which stops the extension or retraction of the actuators at overload.

### 1.4.3 Massage Duty Cycle

This duty cycle specifies the maximum on-times for the massage motors.



**Note:** The system is able to operate the massage motors continuously at the highest level (100%) for maximum 90 minutes within a 120 minutes time period.



**Note:** If the massage motors have been operating for 90 minutes, you have to wait 30 minutes to switch on the massage again.

#### 1.4.4 General safety instructions



**Note:** You must read the user manual carefully before installing or operating the system.



**Caution:** Do not open any of the components under any circumstances. There is a danger of electric shock.



**Note:** The system is not designed for continuous operation. Changing the bed position without interruption must not exceed the duty cycle indicated on the type plate.



**Caution:** The system may only be operated within the mains voltage and frequency ranges as specified on the type plate of the PowerConverter.



**Caution:** Only use the power cord supplied with the PowerConverter. Check that it is not damaged. Do not ever operate the system if the power cord is damaged.



**Danger:** It is not allowed to connect self-constructed products to **LOGICDATA** products. To prevent damage of the unit, use only components suitable for **LOGICDATA** products.



**Caution:** Before connecting or disconnecting any of the components, you must unplug the power cord.



**Caution:** In the event of a malfunction (e.g. if the control unit keeps adjusting the bed because a movement key has jammed), please unplug the unit immediately.



**Danger:** Do not immerse power cable or other parts of the system in water and keep power cable away from heated surfaces.



**Danger:** When changing the bed position there is a risk of pinching. You must therefore ensure that no people or objects are located in the hazardous area or can reach into it.



**Danger:** Do not modify or make any changes to any components of the system.



**Danger:** Do not operate the system in a potentially explosive atmosphere.



**Danger:** In the event of a fault (motor or component), whenever the bed attempts to adjust the height it may move slightly before the safety cut-out is triggered. Please note that there is a potential risk of pinching in this case.

---



**Danger:** This device is not intended for use by individuals (including children) with limited physical, sensory or mental abilities or with a lack of experience and/or lack of expertise, unless they are supervised by a person responsible for their safety or have received instructions from that person on how to use the control unit.

---



**Danger:** Children must be supervised at all times to ensure that they do not play with the system.

---



**Danger:** If the system's power cord is damaged, it must be replaced by the manufacturer or customer service or a similarly qualified person in order to prevent any risks.

---



**Note:** Only clean the components with a dry or slightly moist cloth. Before cleaning, you must always unplug the power cord.

---



**Note:** The system is NO medical device. It is NOT designed for hospital use and is NOT designed to meet hospital standards.

---



**Note:** Do NOT use this system with tent type oxygen therapy equipment or near explosive gases.

---



**Note:** Do NOT use outdoors.

---

## 2 Commissioning

Commissioning involves the procedures required to ensure that the system is installed, operated and configured correctly.



**Danger:** Only qualified technicians may commission the system. Qualified technicians have the necessary electrical engineering training and are familiar with this user manual.

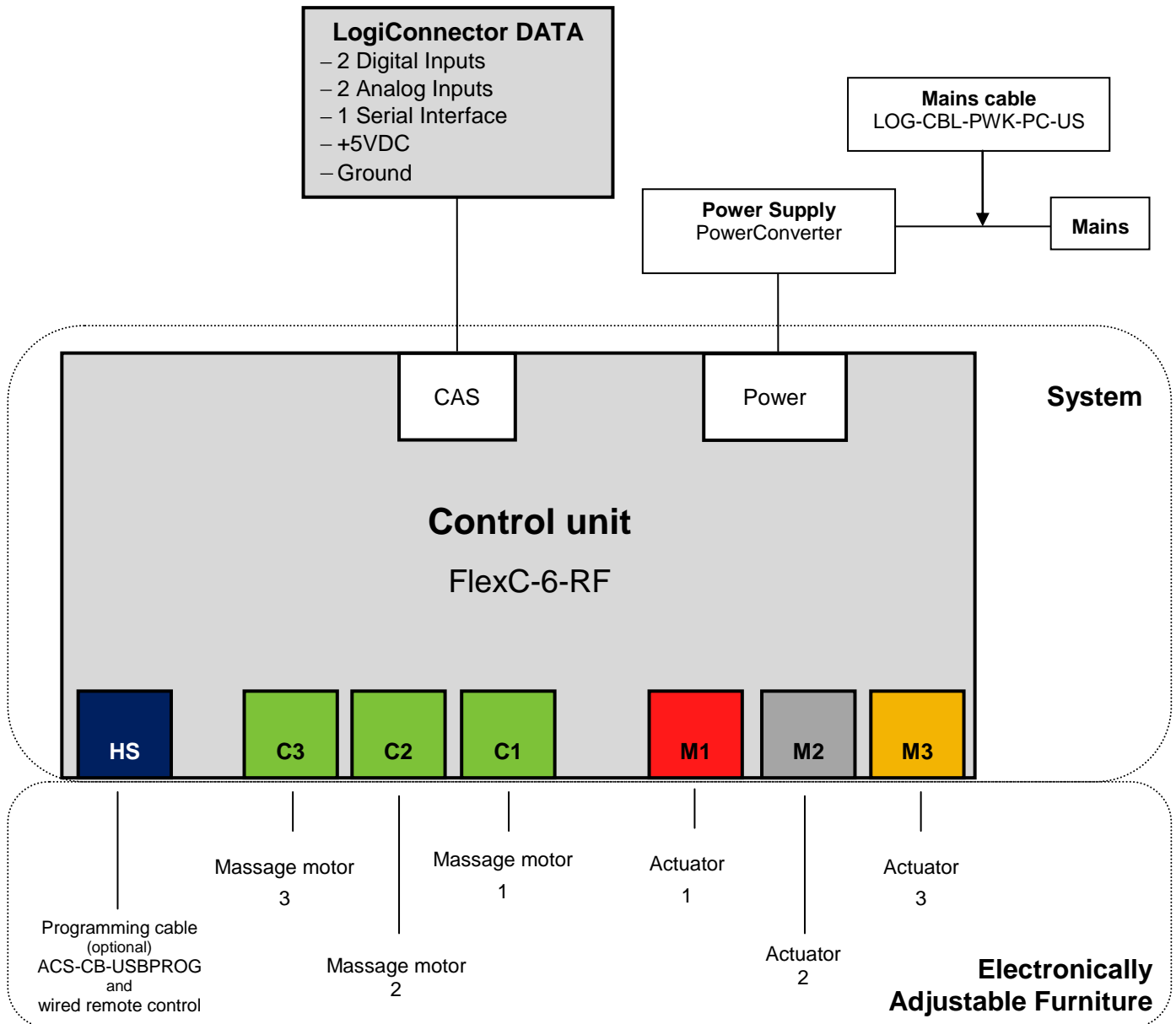


Figure 1: System setup



## 2.1 Mounting Requirements

### Control unit

The control box will be mounted with two screws.

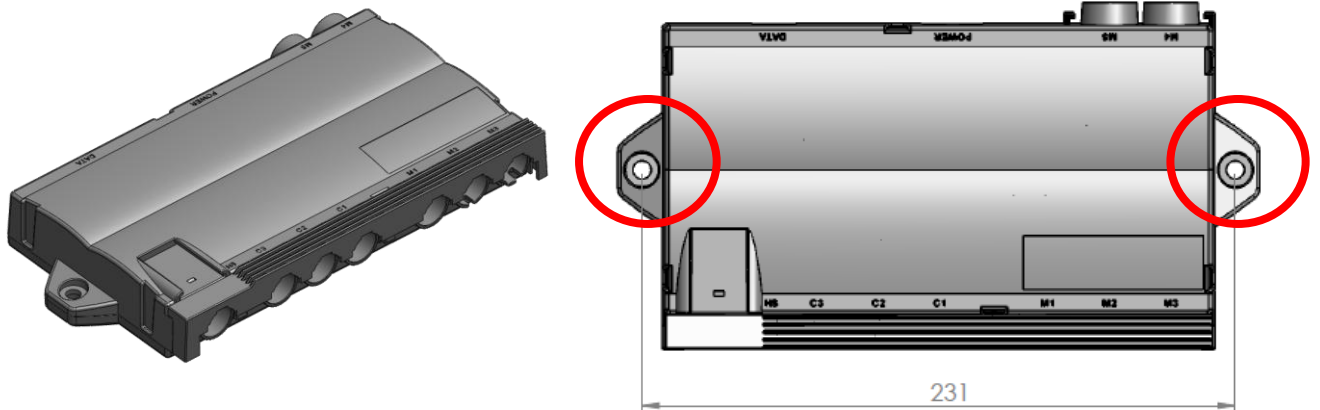


Figure 2: Control box

### Massage motors

The massage motors should be mounted.

## 2.2 Single System

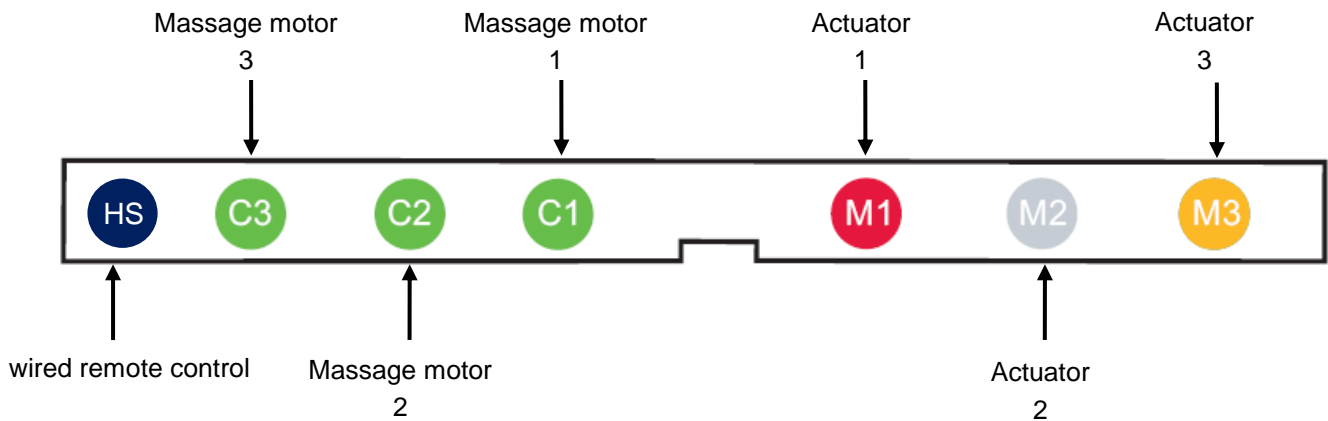


Figure 3: Interfaces

### 2.2.1 Connect actuators

Plug the actuator cables into the relevant motor sockets (M1, M2, M3).



**Note:** When connecting the actuator cables, you must strictly adhere to the sequence M1, M2, M3.

### 2.2.2 Connect massage motors

Plug the massage motors to the corresponding sockets (C1, C2, C3).

### 2.2.3 Plug in the output cable

Plug the output cable to the control unit.



Figure 4: Jack for connecting the mains cable LOG-CBL-PWC-PC-US

### 2.2.4 Snap in the power cord to the hooks

The purpose of the hooks is to relieve the cable connector. It protects the mains cable from damage.



**Note:** Ensure that the cable is not under tension.

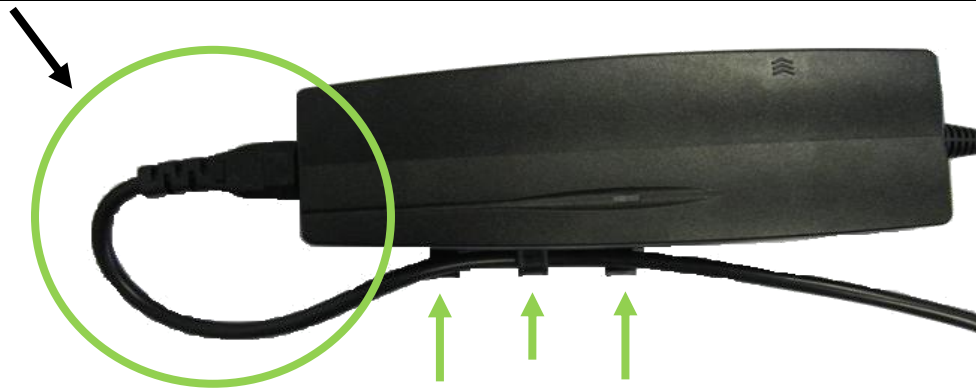


Figure 5: Hooks of the PowerConverter

### 2.2.5 Connect power supply unit to the mains

Plug the power supply unit to an appropriate mains outlet by using the power cord LOG-CBL-PWK-PC-US



**Note:** Before you plug in the power cord, check the following again:

- The mains supply voltage must be as specified on the type plate of control unit.
- All the components must be plugged into the right sockets. When the power cord is plugged in, the system is operational.



**Note:** The system does not react to any user input (e.g. button press on the remote control) within 2 seconds after power-up. This time is needed to completely initialize and power-up the system.

---

### 3 Further information

#### 3.1 *End of life disposal*

When you no longer require the system, please note the following for disposal:



**Note:** Ensure eco-friendly disposal of all components (separate the plastic and electronic parts for collection).

---

#### 3.2 *Technical data*



**Note:** You can find the technical data of your control unit in the appropriate datasheet.

---

#### 3.3 *Optional products*



**Note:** Information about available optional products can be found in the latest product catalogue and on the website [www.logicdata.at](http://www.logicdata.at) .

---

### 3.4 FCC conformity

The following statements must be copied into an end user manual for FCC compliance.



**Note:** This equipment has been tested and found to comply with the limits for a Class B digital device, pursuant to part 15 of the FCC rules. These limits are designed to provide reasonable protection against harmful interference in a residential installation. This equipment generates, uses and can radiate radio frequency energy and, if not installed and used in accordance with the instructions, may cause harmful interference to radio communications. However, there is no guarantee that interference will not occur in a particular installation. If this equipment does cause harmful interference to radio or television reception, which can be determined by turning the equipment off and on, the user is encouraged to try to correct the interference by one or more of the following measures:

- Reorient or relocate the receiving antenna.
- Increase the separation between the equipment and receiver.
- Connect the equipment into an outlet on a circuit different from that to which the receiver is connected.
- Consult the dealer or an experienced radio/TV technician for help.

To assure continued compliance, any changes or modifications not expressly approved by the party responsible for compliance could void the user's authority to operate this equipment.



**Note:** This equipment complies with FCC RF radiation exposure limits set forth for an uncontrolled environment. This transmitter must not be co-located or operating in conjunction with any other antenna or transmitter.

This equipment complies with Part 15 of the FCC Rules. Operation is subject to the following two conditions:

- (1) This device may not cause harmful interference, and
- (2) This device must accept any interference received, including interference that may cause undesired operation.



**Note:** The manufacturer is not responsible for any radio or TV interference caused by unauthorized modifications to this equipment. Such modifications could void the user authority to operate the equipment.

## 4 Manufacturer

<p><b>LOGICDATA</b>          Electronic &amp; Software Entwicklungs GmbH          Wirtschaftspark 18          8530 Deutschlandsberg - Austria</p>	<p>Tel: +43 (0)3462 5198 0          Fax: +43 (0)3462 5198 530          E-mail: office@logicdata.at  <a href="http://www.logicdata.at">http://www.logicdata.at</a></p>
---	---