



The SILVER Series



ADJUSTABLE to your business

The SILVER Series by LOGICDATA is a range of adjustable bases that embodies our commitment to the creation of revolutionary bedroom products. With endless flexibility, unrivalled stability, and cutting-edge functionality – delivered in the industry's smallest packaging with no oversize charges via UPS

and FedEx Ground – each bed in the Series represents a breakthrough in adjustable furniture design. If beds are your business, LOGICDATA is here for you: the ever-growing SILVER Series has products to suit retailers of all sizes, both online and on Main Street. Join us. We're truly one of a kind.



SILVERstandard

The new standard for adjustables

We lead. Others follow. The magnificent SILVERstandard – the first product in the SILVER Series by LOGICDATA – is the adjustable base by which all others are judged: delivering style, ease of assembly, and mechanical excellence in easily-shippable packages. Incorporating patented ELEmatic technology – a concept that integrates the frame's mechanical and electrical components into its side rails – the SILVERstandard stands proudly at the forefront of adjustable furniture technology.

The elegant, minimalistic design of this revolutionary bed frame liberates users from complicated assembly processes and provides flexibility in more ways than one: the SILVERstandard can be transformed from box to bed by a single person in just 15 minutes, while the hidden-cable concept frees up valuable space below the platforms, perfect for underbed storage.

Yet the SILVERstandard is more than just a pretty face: this stunning adjustable's expansive range of functionality is even more impressive than its dashing looks, each feature designed for premium user comfort and sublime ease of use. With Nightstand Reach, Bluetooth/app connectivity, and much more, the SILVERstandard delivers the substance to match its style.

BUILT FOR Business

- Sleek, minimalistic design offering maximum functionality
- Invisible technology system that minimizes cable confusion and frees space
- Single-person assembly: from box to bed in just 15 minutes
- Easy shipping: packed and delivered in two easy-to-handle boxes
- No oversize charges with UPS or FedEx Ground
- Savings on logistics and warehousing costs



SAFE & Reliable

- 700 lbs. (340 kg) max. load
- Free-fall design – reduced risk of pinching
- Emergency Lowering function
- Safety testing according to rigorous UL standards
- 10-year limited warranty

Available sizes: Twin XL, Queen, King, and Split King

FEATURES

HEAD UP & FOOT UP

Endless flexibility. Experience smooth up and down movement of the head and foot sections.

NIGHTSTAND REACH

Stay close. Nightstand Reach stops your position moving forward during motion, ensuring you always have the essentials to hand.

WIRELESS REMOTE CONTROL

Full control. Move to pre-set ergonomic memory positions; or save your own for maximum comfort.

CONTROL VIA THE APP

Ditch the Remote, keep the Control. Use the SILVERmotion App to control your SILVERstandard.

MEMORY POSITIONS

Sleep better. Our ergonomic memory positions have been tested to deliver the perfect night's sleep.

FLAT POSITION BUTTON

Get moving. At the touch of a button, move effortlessly to the flat position.

ENHANCED USER SAFETY

Safety first. With the Child Lock function and Free-fall design, we're looking out for you.

HIGH-WEIGHT CAPACITY

Keep steady. The SILVERstandard is stable and durable under loads of up to 700 lbs (340 kg).

WIRELESS SYNC

Stay connected. Use Wireless Sync Mode to control two Twin XL bases as a Split King frame.

USB PORTS

Plug in. Stay in touch with your smart device, even while its charging.

UNDERBED LIGHT

Bright ideas. Never lose your way at night.

* VIBRATION MASSAGE

Feel better. Experience three soothing massage settings: Constant, Wave, and Pulse.

*Exclusive to the SILVERstandard+



SILVERlite

Featherweight Champion

The all-new SILVERlite is the newest product in the SILVER Series by LOGICDATA and a triumph of modern, minimalistic design.

Even with its elegant, lightweight frame, the base functions perfectly under a market-leading 1,000 lbs of load – enough to support the heaviest of heavy sleepers. Furthermore, the Child Lock, Free-fall design, and Emergency Lowering functions make owning the SILVERlite a stress-free, safe, and enjoyable experience.

The SILVERlite fits neatly into the smallest shippable adjustable package ever made, but thanks to its top-of-the-range feature set, this pocket rocket delivers in performance too: the smooth, reliable movement of the platforms creating an in-bed experience like no other. The subtle, easy-to-use Wireless Remote Control allows users to move to specially developed ergonomic memory positions or save their own for maximum comfort, while Wireless Sync Mode connects two Twin XL bases to create a

Split King frame, allowing users to move both sides of the bed in tandem.

With LOGICDATA's endless customization options, functionality can be extended to include USB Ports, an LED Under-bed Light, Bluetooth/app connectivity, and much more besides.

Our SILVERlite is a true featherweight champion: pound-for-pound the most innovative bed frame on the market today. No other adjustable comes close.

BUILT FOR Business

- Attractive, minimalistic design offering high-level functionality
- Single-person assembly: from box to bed in just 10 minutes, no tools required
- Perfect for e-commerce: packed and delivered in just one easy-to-handle box
- No oversize charges with UPS or FedEx Ground
- Savings on logistics and warehousing costs



SAFE & Reliable

- Best-in-class stability:
1,000 lbs. (450 kg) max. load
- Free-fall design –
reduced risk of pinching
- Emergency Lowering function
- Safety testing according to
rigorous UL standards
- 10-year limited warranty

Available sizes: Twin XL, Queen,
King, California King, and Split King

FEATURES

HEAD UP & FOOT UP

Endless flexibility. Experience smooth up and down movement of the head and foot sections.

WIRELESS REMOTE CONTROL

Full control. Move to pre-set ergonomic memory positions; or save your own for maximum comfort.

EASY ASSEMBLY

No tools needed. From box to bed in just 10 minutes.

MEMORY POSITIONS

Sleep better. Our ergonomic memory positions have been tested to deliver the perfect night's sleep.

HIGH-WEIGHT CAPACITY

Keep steady. The SILVERlite is stable and durable under loads of up to 1,000 lbs.

WIRELESS SYNC

Stay connected. Use Wireless Sync Mode to control two Twin XL bases as a Split King frame.

FLAT POSITION BUTTON

Get moving. At the touch of a button, move effortlessly to the flat position.

ENHANCED USER SAFETY

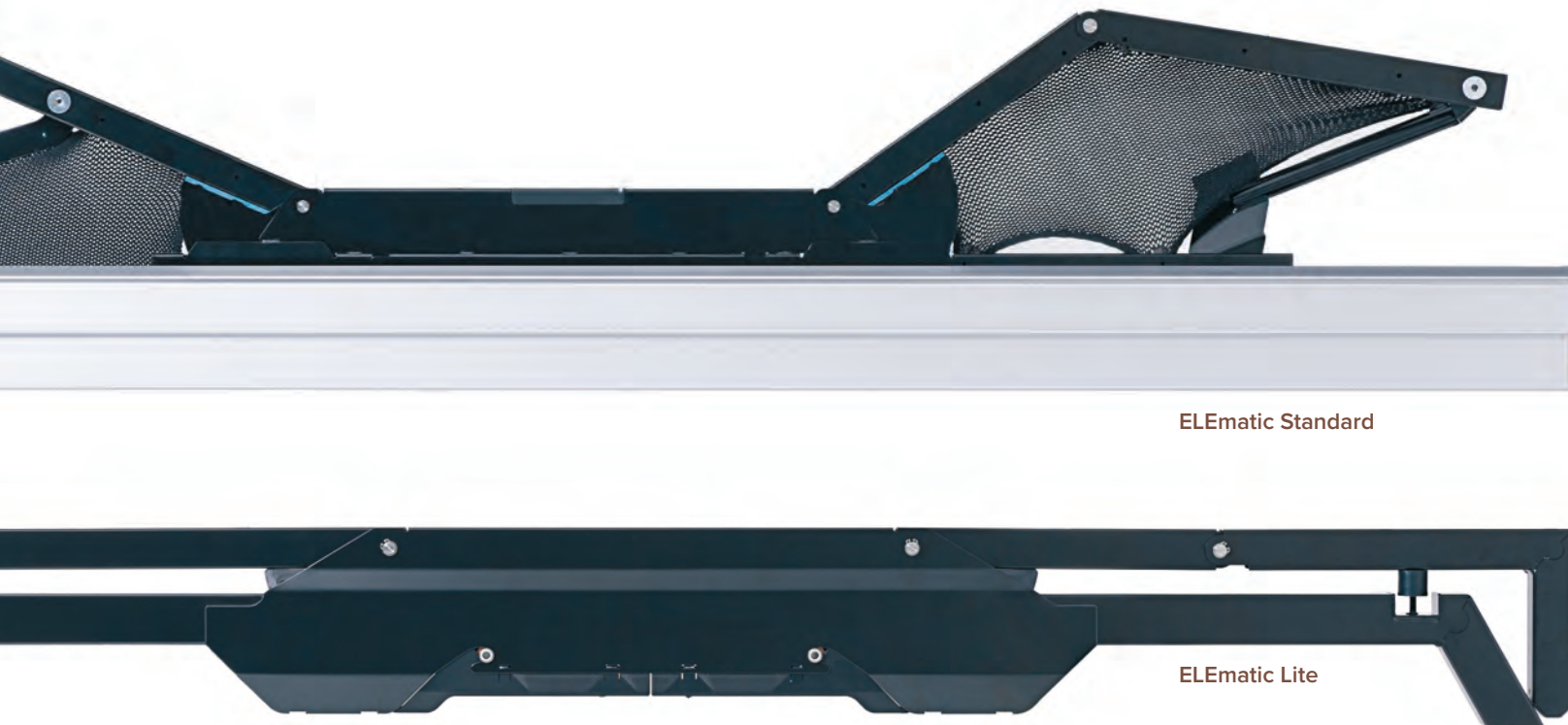
Safety first. With the Child Lock function and Free-fall design, we're looking out for you.

UNDERBED LIGHT (OPTIONAL)

Bright ideas. Never lose your way at night.

USB PORTS (OPTIONAL)

Plug in. Stay in touch with your smart device, even while its charging.



ELEmatic Standard

ELEmatic Lite

ELEmatic Modules

We'll do the motion. You do the rest.

Looks are important. Whether it's the perfect platforms, cushioning, or upholstery material, we know that how a bed looks is just as important as how it feels to sleep in.

So how can you deliver market-leading adjustable technology to your customers while maintaining your brand's sense of individuality, uniqueness, and style?

Easy. By implementing one of LOGICDATA's ELEmatic component packages – the ELEmatic Standard or the ELEmatic Lite – you'll gain the freedom to create your own adjustable bedroom product, perfectly matched to the unique style of your brand: full customization, no compromise.

The ELEmatic Standard and ELEmatic Lite are safe, reliable mechatronic systems, compatible with a wide range of bed frame styles; including models with box springs, slatted platforms, underbed storage options, and non-standard headboard designs.

SET YOUR BED in motion

HOW DOES IT WORK?

Your ELEmatic package contains all the mechatronic and electronic components necessary to provide smooth upward and downward movement of the mattress. The Wireless Remote Control gives your customers easy access to an extensive range of adjustable functionality.

WHAT'S INSIDE?

Your fully-customizable ELEmatic package contains:

- 2 high-performance mechatronic side rails
- 1 Power Supply
- 1 Control Box (ELEmatic Lite)
- 1 Customizable Remote Control
- All required cables

WHAT CAN IT DO?

- Independent up/down movement of the Head and Foot Platforms
- Memory Positions (Anti-Snore & Zero-Gravity)
- Programmable Memory Positions
- Child Lock
- App Connectivity

MOTION FOR YOUR LIFE

Who are we?

At LOGICDATA, we see what others do not see. We go further where others stop. Our minds are always in motion, our hearts inspired by innovation, our souls committed to the development of products that will change the world.

Since 1997, we've dedicated ourselves to the creation of market-leading solutions that bring motion to the lives of millions. Our philosophy is truly global, with over 330 employees in Austria, Slovenia, China, Croatia, and the USA working together with one goal: to lift your customers to new heights.

The LOGIC HOME Business Unit develops a vast range of intelligent products and components for adjustable home furniture, with premium quality and unrivaled execution always at the forefront of our offering.

Over two decades' experience in the business of home and office furniture has taught us to listen to who matters: you. Our endless flexibility and burning desire to adapt to the needs to our customers are the cornerstones of our success and the reason why – when it comes to service, quality, and innovation – LOGICDATA leads the way. That's where we plan to stay. We'll see you there.



EMPLOYEES

> 330

KEY PEOPLE

Walter Koch
Founder and Owner

Johannes Gradwohl
CEO

Jörg Schweiger
COO

Stefan Lukas
CTO



HEADQUARTERS

Austria
Deutschlandsberg

SUBSIDIARIES

USA
Grand Rapids

Slovenia
Maribor

China
Zhuhai

Croatia
Zagreb



LOGICDATA

Electronic & Software Entwicklungs GmbH

Wirtschaftspark 18,
8530 Deutschlandsberg • Austria
T: +43 (0) 3462 51 98 0,
F: +43 (0) 3462 51 98 530
office.at@logicdata.net

LOGICDATA North America Inc.

5300 Broadmoor Ave SE, Suite D
Grand Rapids, MI 49512 • USA
T: +1 616 328 8841
office.na@logicdata.net

www.logicdata.net